



ΔΙΑΚΟΠΤΕΣ ΜΙΝΙ ΟΡΕΙΧΑΛΚΙΝΟΙ με ΘΗΛ.ΣΠΕΙΡΩΜΑ

DESCRIPTION

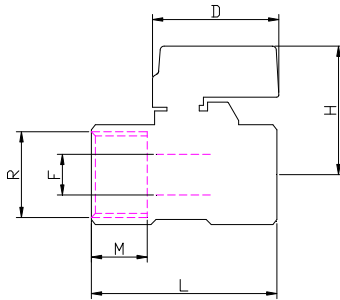
Mini ball valve Mignon series way ball valve F/F with aluminium lever



FEATURES

- brass CW617N body, ball, stem.
- ball ground by diamond-tipped tool, chromium plated.
- virgin P.T.F.E. seats with 7° min. tightness angle.
- o-ring stem packing in NBR rubber.
- aluminium lever with red epoxy coating
- matt chrome finishing.
- threading to ISO 228/1.
- PN 10: TEMP. : -20°C ÷ 130°C

LEADING DIMENSIONS



| | | | |
|--------|----|------|----|
| R | ¼" | 3/8" | ½" |
| D (mm) | 23 | 23 | 23 |
| H (mm) | 26 | 27 | 31 |
| L (mm) | 42 | 42 | 45 |
| M (mm) | 12 | 12 | 12 |
| F (mm) | 6 | 8 | 10 |

WORKING PREASSURES AT 80°C

| | | | | |
|-------|------|------|------|------------|
| PN 10 | * | * | * | p.s.i. 150 |
| | 1/4" | 3/8" | 1/2" | |

PERDITE DI CARICO / PRESSURE DROPS

| | | | |
|----|-----|------|-----|
| R | ¼" | 3/8" | ½" |
| Kv | 2.2 | 2.2 | 5.5 |

$$\Delta P [\text{mm H}_2\text{O}] = 10.000 \times \left[\frac{G [\text{m}^3/\text{h}]}{Kv} \right]^2$$