

DESCRIPTION

ΣΦΑΙΡ. ΚΡΟΥΝΟΙ ΣΥΣΦΙΓΕΗΣ ΧΑΛΚΟΣΩΛΗΝΑ

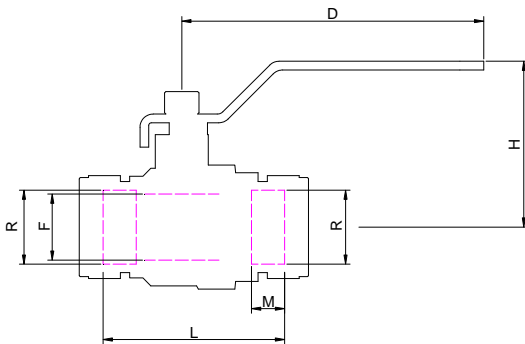
Full way ball valve with compression ends for copper pipe
to BS EN 1254, made of brass nickel plated
Red flat steel lever



FEATURES

- brass CW617N body, ball, stem.
- ball ground by diamond-tipped tool, chromium plated.
- virgin P.T.F.E. seats with 7° min. tightness angle.
- o-ring stem packing in NBR rubber.
- Steel lever with red plastic coating.
- Nickel plated finishing.
- Compression ends to BS EN 1254
- PN 16 -30°C, 6bar- 110°C

LEADING DIMENSIONS



| | | | | | | |
|-----|------|------|------|-----|-----|--|
| R'' | 15 | 18 | 22 | 28 | 35 | |
| F | 14 | 15 | 20 | 25 | 32 | |
| L | 59 | 60 | 64 | 69 | 85 | |
| M | 14 | 14.5 | 13 | 13 | 15 | |
| D | 85 | 85 | 85 | 114 | 142 | |
| H | 48.5 | 49 | 51.5 | 63 | 71 | |

WORKING PREASSURES AT 80°C

| | | | | | | | | | |
|-------|--|----|----|----|----|----|--|--|------------|
| PN 16 | | * | * | * | * | * | | | p.s.i. 250 |
| | | 15 | 18 | 22 | 28 | 35 | | | |

PRESSURE DROPS

| | | | | | | |
|-----|--|----|----|----|----|----|
| R'' | | 15 | 18 | 22 | 28 | 35 |
| Kv | | 9 | 15 | 30 | 57 | 94 |

$$\Delta P \text{ [mm H}_2\text{O]} = 10.000 \times \left[\frac{G \text{ [m}^3\text{/ h]}}{Kv} \right]^2$$